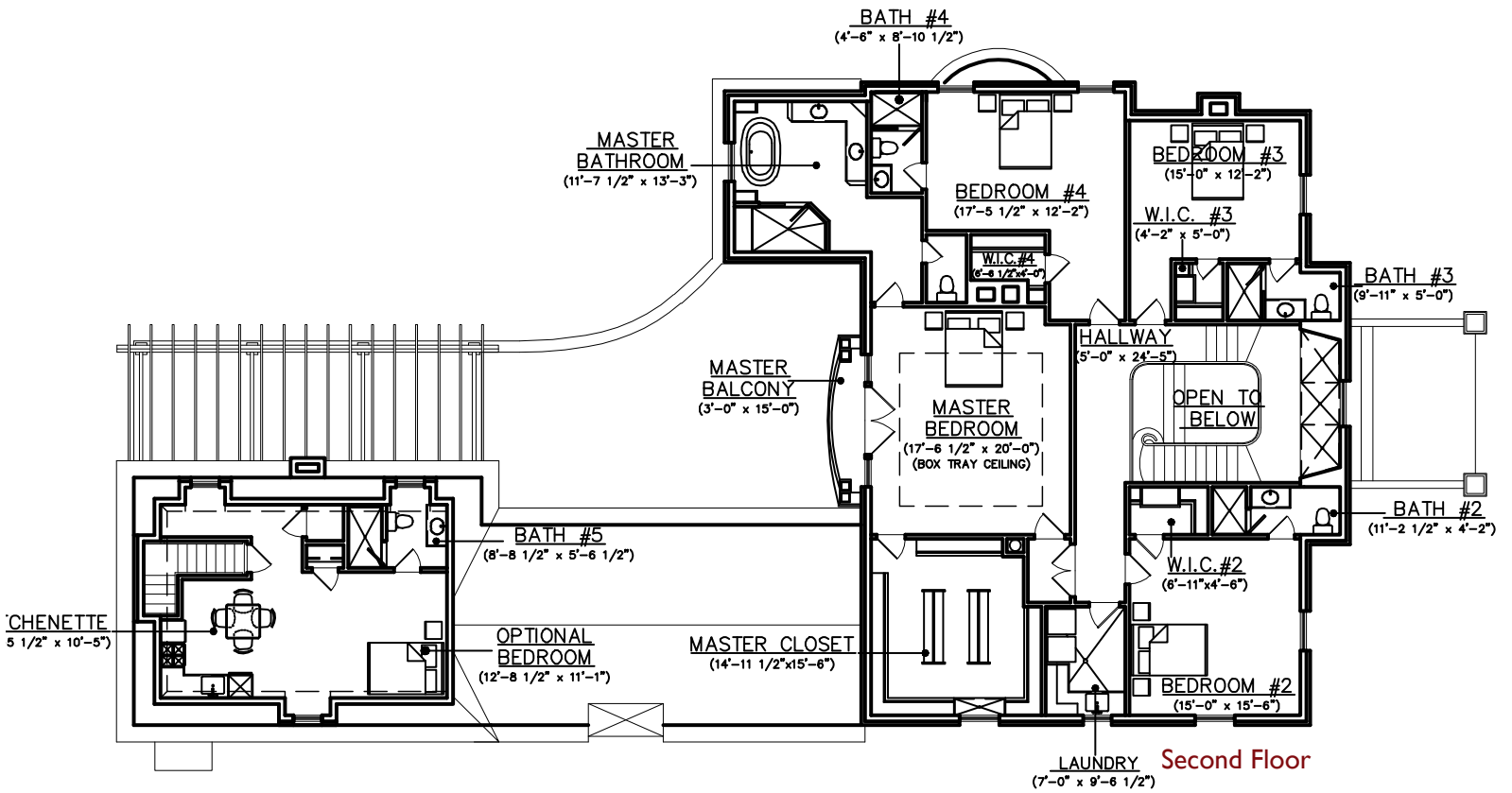
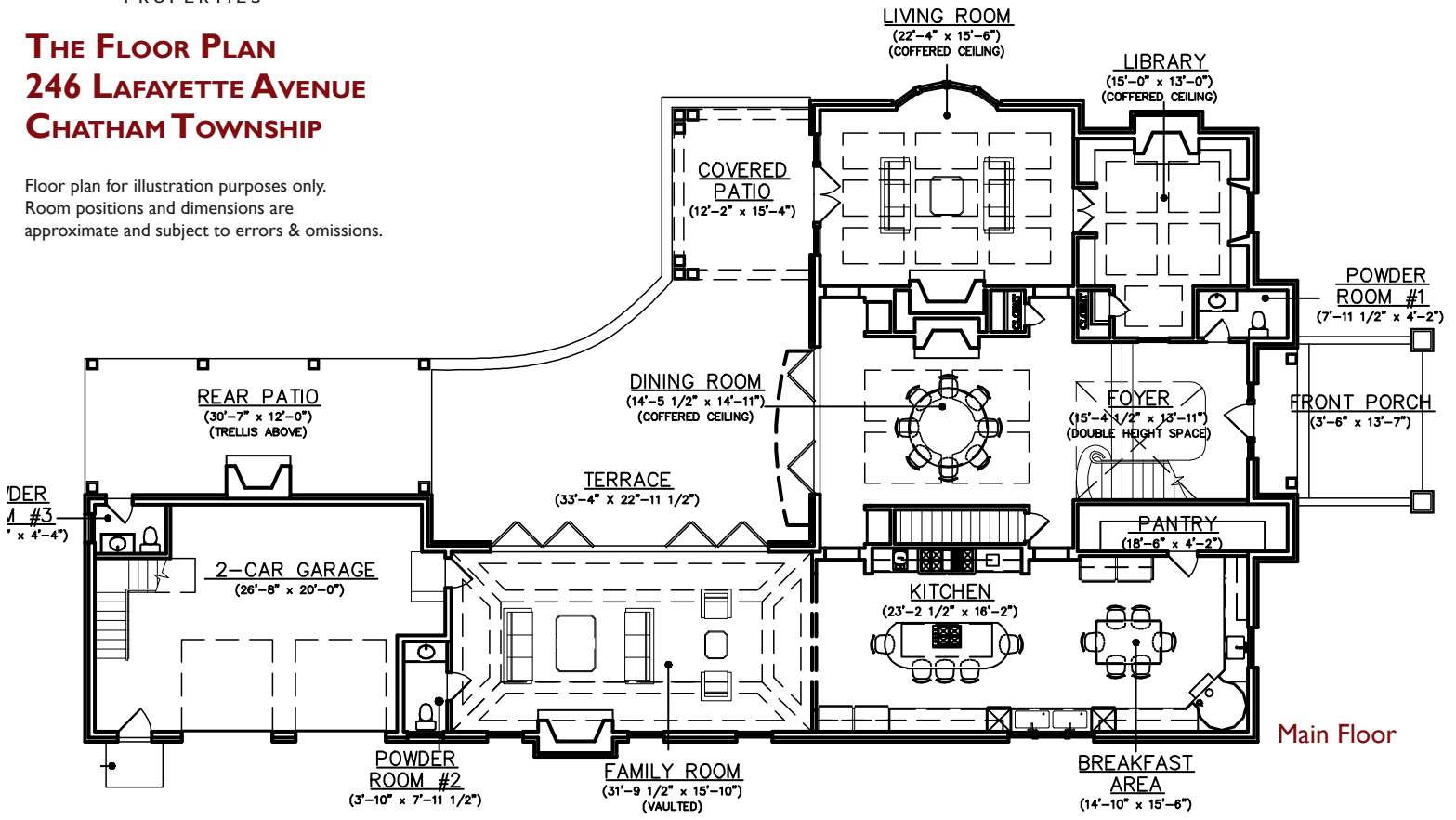


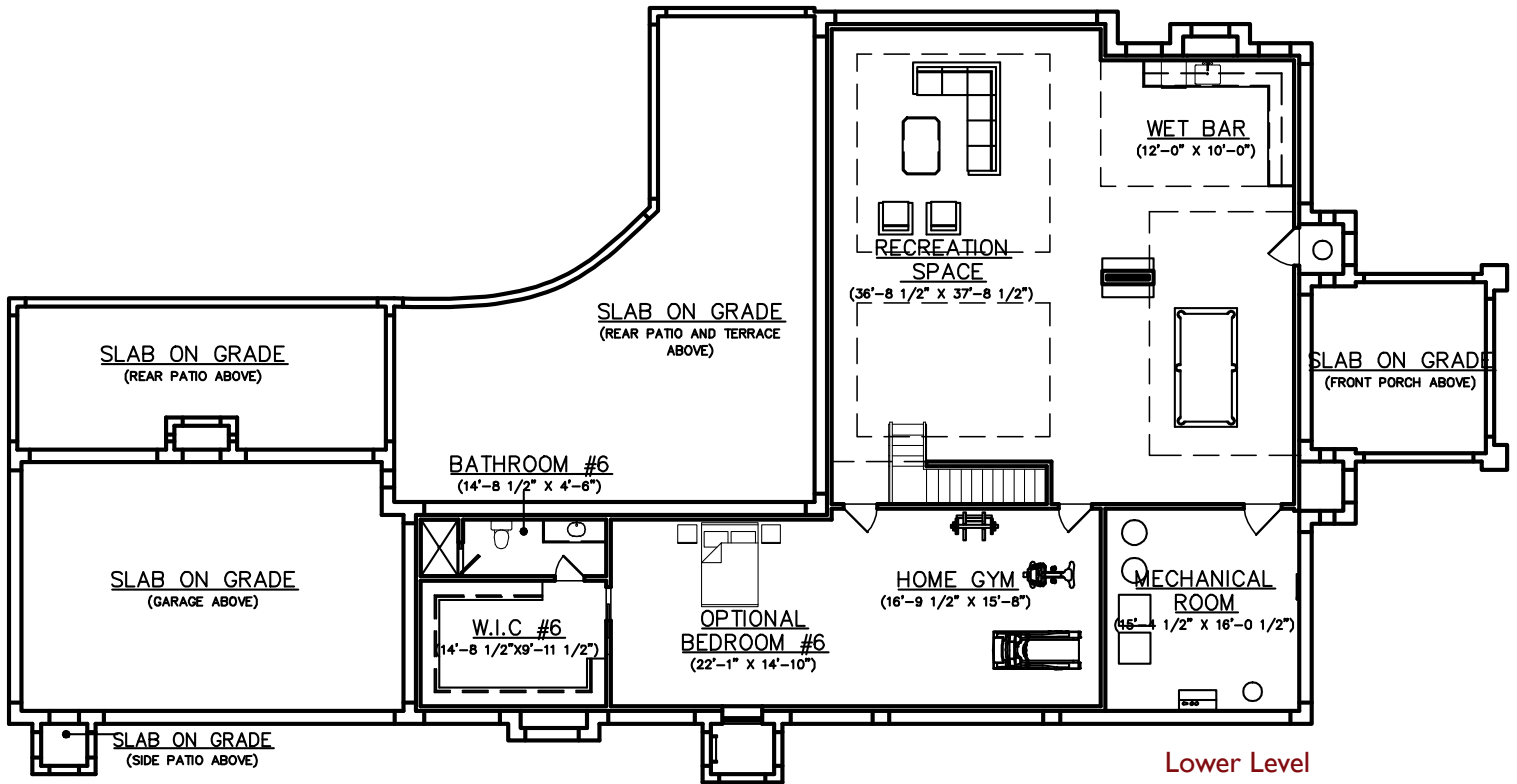
THE FLOOR PLAN
246 LAFAYETTE AVENUE
CHATHAM TOWNSHIP

Floor plan for illustration purposes only.
Room positions and dimensions are approximate and subject to errors & omissions.



THE FLOOR PLAN
246 LAFAYETTE AVENUE
CHATHAM TOWNSHIP

Floor plan for illustration purposes only.
Room positions and dimensions are
approximate and subject to errors & omissions.



Broker-Sales Associate
Office 973.635.7400 x108 Cell 973.476.7323
BobbieMV@aol.com
www.BobbieVeeder.com